

Sander/Polisher

Air Motor and Machine Parts

Models:

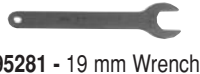
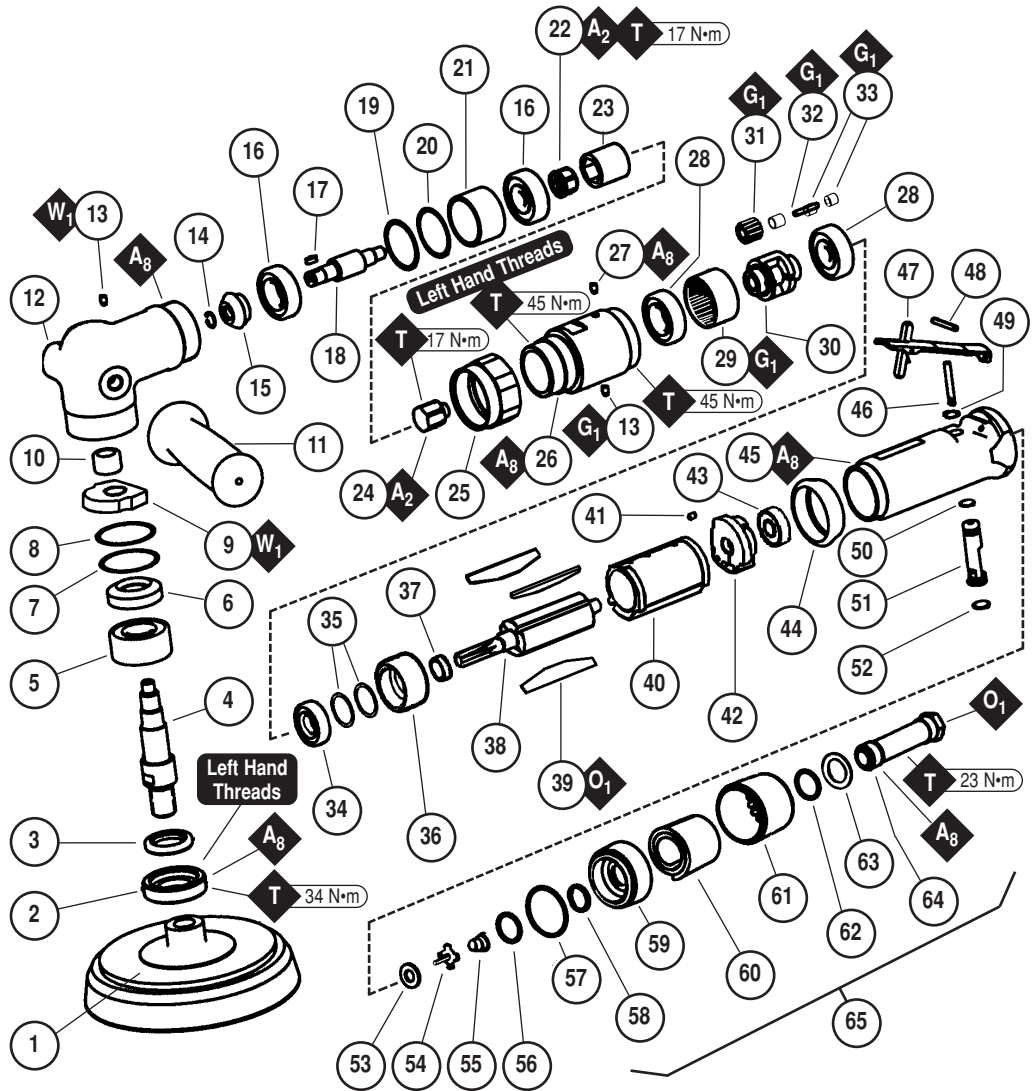
51600 - 2,000 RPM, Dry
 51601 - 3,100 RPM, Dry

! WARNING

Always operate, inspect and maintain this tool in accordance with the Safety Code for portable air tools (ANSI B186.1) and any other applicable safety codes and regulations. Please refer to Dynabrade's Warning/Safety Operating Instructions for more complete safety information.

Index Key

No.	Part #	Description
1		Optional Pads on pg. 4
2	50963	Retainer
3	50899	Shaft Seal
4	07180	Spindle Assembly
5	50887	Bearing
6	50997	Bevel Gear - 2,000 RPM
	50996	Bevel Gear - 3,100 RPM
7	96306	Shim (as req.)
8	96307	Shim (as req.)
9	02048	Wick
10	50325	Shell Bearing
11	53163	Handle Assembly
12	50980	Head Assembly (Incl. 01041 Lube Fitting)
13	01041	Gear Lubrication Fitting (2)
14	95939	Retaining Ring
15	52158	Bevel-Pinion - 2,000 RPM
	52124	Bevel-Pinion - 3,100 RPM
16	01266	Bearing (2)
17	50435	Key
18	50985	Pinion Shaft
19	07154	Shim (as req.)
20	07155	Shim (as req.)
21	50986	Spacer
22	53551	Coupling Nut
23	50951	Coupler
24	50956	Adapter
25	50987	Lock Ring
26	50970	Gear Casing Assembly (Incl. 01041 Grease Fitting)
27	04014	Screw
28	02552	Bearing (2)
29	53191	Ring Gear
30	53180	Planetary Carrier
31	53193	Gear (2)
32	53182	Gear Shaft (2)
33	04026	Bearing (4)
34	01007	Bearing
35	01121	Shim Pack (as req.)
36	53183	Front Bearing Plate
37	01010	Spacer
38	04017	Rotor
39	01185	Blades (4/pkg.)
40	01028	Cylinder
41	50767	Pin
42	01721	Rear Bearing Plate
43	02649	Bearing
44	53175	Collar
45	51616	Housing - 51600
	51617	Housing - 51601
46	01477	Valve Stem
47	01089	Throttle Lever
48	01017	Spring Pin
49	95558	Retaining Ring
50	95730	O-Ring
51	01247	Speed Regulator
52	01024	O-Ring
53	01464	Seal
54	01472	Tip Valve
55	01468	Spring
56	01564	Air Control Ring
57	95438	O-Ring
58	95711	Retaining Ring
59	94521	Muffler Base
60	94528	Muffler
61	94522	Muffler Cap
62	95375	O-Ring
63	94526	Spacer
64	94523	Inlet Adapter
65	94519	Muffler Assembly



KEY	
	Oil: O ₁ = Air Lube
	Wicking: W ₁ = Wicking Gear Oil
	Grease: G ₁ = Lubriplate 630AA
	Adhesive: A ₂ = Loctite #271 A ₈ = Loctite #567
	Torque: N•m x 8.85 = In. - lbs.

Important Operating, Maintenance and Safety Instructions

Carefully read all instructions before operating or servicing any Dynabrade® Abrasive Power Tool.

Warning: Hand, wrist and arm injury may result from repetitive work motion and overexposure to vibration.

Important: All Dynabrade Rotary Vane air tools must be used with a Filter-Regulator-Lubricator to maintain all warranties.

Operating Instructions:

Warning: Eye, face, respiratory, sound and body protection must be worn while operating power tools. Failure to do so may result in serious injury or death. Follow safety procedures posted in workplace.

1. With power source disconnected from tool, securely fasten abrasive/accessory on tool.
2. Install air fitting into inlet bushing of tool. **Important:** Secure inlet bushing of tool with a wrench before attempting to install the air fitting to avoid damaging valve body housing.
3. Connect power source to tool. Be careful not to depress throttle lever in the process.
4. Check tool speed with tachometer. If tool is operating at a higher speed than the RPM marked on the tool or operating improperly, the tool should be serviced to correct the cause before use.

Maintenance Instructions:

1. Check tool speed regularly with a tachometer. If tool is operating at a higher speed than the RPM marked on the tool, the tool should be serviced to correct the cause before use.
2. Some silencers on air tools may clog with use. Clean and replace as required.
3. All Dynabrade Rotary Vane air motors should be lubricated. Dynabrade recommends one drop of air lube per minute for each 10 SCFM (example: if the tool specifications state 40 SCFM, set the drip rate of your filter-lubricator at 4 drops per minute). Dynabrade Air Lube (P/N **95842**: 1 pt. 473 ml) is recommended.
4. An Air Line Filter-Regulator-Lubricator must be used with this air tool to maintain all warranties. Dynabrade recommends the following: **11411** Air Line Filter-Regulator-Lubricator — Provides accurate air pressure regulation, two-stage filtration of water contaminants and micro-mist lubrication of pneumatic components. Operates up to 55 SCFM @ 100 PSIG has 1/2" NPT female ports.
5. Lubricate Planetary Gears through the gear casing grease fitting with 2-3 plunges for every 50 hours of use, to achieve maximum gear life (order **95542** Grease and **95541** Gun).
6. Lubricate Wick System through the angle gear head gear oil fitting with 2-3 plunges for every 8 hours of use, to achieve maximum gear life. **Important:** Use only the recommended angle gear oil for the wick system. Do not contaminate the wick with any other oil or grease product (order **95848** Gear Oil and **95541** Gun).
7. Use only genuine Dynabrade replacement parts. To reorder replacement parts, specify the **Model #, Serial # and RPM** of your machine.
8. A Motor Tune-Up Kit (P/N **96178**) is available which includes assorted parts to help maintain motor in peak operating condition. Please refer to Dynabrade's Preventative Maintenance Schedule for a guide to expectant life of component parts.
9. A Lubrication Accessory Kit (P/N **50790**) is available which contains Dynabrade's **95542** Grease, **95541** Lubrication Gun (2) and **95848** Gear Oil.
10. Mineral spirits are recommended when cleaning the tool and parts. Do not clean tool or parts with any solvents or oils containing acids, esters, ketones, chlorinated hydrocarbons or nitro carbons.

Safety Instructions:

Products offered by Dynabrade should not be converted or otherwise altered from original design without expressed written consent from Dynabrade, Inc.



- **Important:** User of tool is responsible for following accepted safety codes such as those published by the American National Standards Institute (ANSI).
- Operate machine for one minute before application to workpiece to determine if machine is working properly and safely before work begins.
- Always disconnect power supply before changing abrasive/accessory or making machine adjustments.
- Inspect abrasives/accessories for damage or defects prior to installation on tools.
- Please refer to Dynabrade's Warning/Safety Operating Instructions Tag (Reorder No. **95903**) for more complete safety information.
- **Warning:** Hand, wrist and arm injury may result from repetitive work, motion and overexposure to vibration.

Notice

All Dynabrade motors use the highest quality parts and metals available and are machined to exacting tolerances. The failure of quality pneumatic motors can most often be traced to an unclean air supply or the lack of lubrication. Air pressure easily forces dirt or water contained in the air supply into motor bearings causing early failure. It often scores the cylinder walls and the rotor blades resulting in limited efficiency and power. Our warranty obligation is contingent upon proper use of our tools and cannot apply to equipment which has been subjected to misuse such as unclean air, wet air or a lack of lubrication during the use of this tool.

Lifetime Warranty

All Dynabrade portable pneumatic power tools are rigorously inspected and performance tested in our factory before shipping to our customers. If a Dynabrade tool develops a performance problem and an inherent defect is found during normal use and service, Dynabrade will warrant this tool against defects in workmanship and materials for the lifetime of the tool. Upon examination and review at our factory, Dynabrade shall confirm that the tool qualifies for warranty status, and will repair or replace the tool at no charge to the customer. Normally wearable parts and products are NOT covered under this warranty. Uncovered items include bearings, contact wheels, rotor blades, regulators, valve stems, levers, shrouds, guards, O-rings, seals, gaskets and other wearable parts. Dynabrade's warranty policy is contingent upon proper use of our tools in accordance with factory recommendations, instructions and safety practices. It shall not apply to equipment that has been subjected to misuse, negligence, accident or tampering in any way so as to affect its normal performance. To activate lifetime warranty, customer must register each tool at www.dynabrade.com. Dynabrade will not honor lifetime warranty on unregistered tools. A one-year warranty will be honored on all unregistered portable pneumatic power tools. Lifetime warranty applies only to portable pneumatic tools manufactured by Dynabrade, Inc. in the USA. Lifetime warranty applies only to the original tool owner; warranty is non-transferable.

Model Number	Motor HP (W)	Motor RPM	Sound Level	Air Flow Rate SCFM (LPM)	Air Pressure PSIG (Bars)	Spindle Thread	Weight Pound (kg)	Length Inch (mm)	Height Inch (mm)
51600	.7 (522)	0-2,000	82 dB(A)	43 (1,218)	90 (6.2)	M14 x 2 male	4.8 (2.2)	13 (330)	3-1/8 (79)
51601	.7 (522)	0-3,000	80 dB(A)	41 (1,161)	90 (6.2)	M14 x 2 male	4.8 (2.2)	13 (330)	3-1/8 (79)

Additional Specifications: Air Inlet Thread 1/4" NPT • Hose I.D. Size 3/8" (10 mm)

Disassembly/Assembly Instructions - Sander/Polisher

Important: Manufacturer's warranty is void if tool is disassembled before warranty expires.
Please refer to parts breakdown for part identification.

Motor and Gear Casing Disassembly:

1. **Important:** Inlet adapter must be secured before attempting to remove air fitting to avoid damaging composite motor housing.
2. Disconnect tool from power source, and secure motor housing, using the two molded flats, in a padded vise.
3. Remove **50970** Gear Casing Assembly using 40 mm wrench flats provided.
4. Remove **04014** Set Screw from gear casing.
5. Push **50956** Hex Adapter through **50970** Gear Casing Assembly.
6. Remove **02552** Bearing from planetary assembly (opposite end from hex adapter).
7. Remove **53191** Ring Gear and spur gears from **53180** Planetary Carrier.
8. Secure planetary carrier in vise and remove **50956** Hex Adapter. Press carrier through **02552** Bearing.
9. Grab onto pinion gear and pull **53169** Motor Assembly from motor housing.
10. Secure **01028** Cylinder and press **04017** Rotor through **01721** Rear Bearing Plate.
11. Press **04017** Rotor through **53183** Front Bearing Plate and remove **01010** Spacer, **01007** Bearing and shims.

Motor Disassembly Complete.

Motor Housing Disassembly:

1. Secure motor housing, using the two molded flats in a padded vise, with the air inlet facing upwards.
2. Remove **94519** Muffler Assembly from motor housing.
3. Remove **01564** Air Control Ring, **01468** Spring, **01472** Tip Valve and **01464** Seal from motor housing.
4. Using a 2.5 mm drift pin, tap **01017** Spring from housing and remove **01089** Throttle Lever and **01477** Valve Stem.
5. Remove **95558** Retaining Ring. Push **01247** Speed Regulator Assembly from housing.

Motor Housing Disassembly Complete.

Right-Angle Housing and Spindle Disassembly:

1. Secure housing in a padded vise, and remove **50987** Lock Ring (left-hand thread) using 44 mm wrench flats.
2. Remove **50951** Coupler and pull **53351** Coupling Nut and pinion assembly from housing.
3. Secure pinion in a padded vise and remove **53551** Coupling Nut, remove **01266** Bearing, **50986** Spacer and shims.
4. Secure **01266** Bearing and push **50985** Pinion Shaft through pinion and bearing, remove **50435** Key.
5. Secure housing in a padded vise with spindle facing upwards.
6. Remove **50963** Retainer using an adjustable pin wrench (left-hand thread).
7. Pull spindle assembly from angle-housing. Remove shims and **02048** Wick from housing.
8. Secure **50887** Bearing and push spindle through bevel gear and bearing.
9. Remove **96325** Shell Bearing using **57099** Bearing Puller.

Angle-Housing Disassembly Complete.

Motor and Gear Casing Assembly:

Important: Be sure parts are clean and in good repair before assembling. Follow all grease, oil, and torque specifications.

1. Place **04017** Rotor in padded vise with threaded spindle facing upwards.
2. Slip **01010** Spacer onto **04017** Rotor.
3. Place a .002" shim into **53183** Front Bearing Plate as an initial spacing and slip **01007** Bearing into plate. **Note:** **01121** Shim Pack contains .001" and .002" shims.
4. Press bearing/bearing plate assembly onto rotor.
5. Check clearance between rotor and bearing plate by using a .001" feeler gauge. Clearance should be at .001" to .0015". Adjust clearance by repeating steps 2-4 with different shim if necessary.
6. Once proper rotor gap clearance is achieved, install well lubricated **01185** Blades (4) into rotor slots. Dynabrade recommends using their **95842** Air Lube.
7. Install cylinder over rotor/pinion. Be sure air inlet holes of cylinder face away from **53183** Front Bearing Plate.
8. Press **02649** Rear Bearing into rear bearing plate. Press bearing/bearing plate assembly onto rotor. Be sure that pin and air inlet holes line up with pin slot and air inlet holes in cylinder.
Important: Fit must be snug between bearing plates and cylinder. If too tight, rotor will not turn freely. Rotor must then be lightly tapped at press fit end so it will turn freely while still maintaining a snug fit. A loose fit will not achieve the proper preload of motor bearings.
9. Secure motor housing in padded vise so motor cavity faces upwards. Install motor assembly into housing. Be sure motor inlet is facing the handle and it drops all the way into housing.
10. Press front **02552** Bearing onto front end of **53180** Planetary Carrier.
11. Apply #271 Loctite® to **50956** Hex Adapter and install onto **53180** Planetary Carrier (torque 17.0 N•m/150 in. - lbs.).
12. Install **53193** Gears, **04026** Bearings and **53182** Gear Shafts onto planetary carrier.
13. Slip **53191** Ring Gear over gears and press rear **02552** Bearing onto planetary carrier.
14. Install planetary carrier assembly into **50970** Gear Casing by aligning the slot in **53191** Ring Gear with set screw hole.
15. Apply #567 Loctite® (or equivalent) to **04014** Set Screw and install into **50970** Gear Casing.
16. Apply two drops of #271 Loctite® adhesive to motor housing threads.
17. Install gear casing sub-assembly onto motor housing to secure motor, torque 28 N•m/250 in-lbs.

Disassembly/Assembly Instructions - Sander/Polisher (continued)

Motor Housing Assembly:

1. Insert **01247** Regulator with o-rings and valve stem, place into motor housing. Secure with **95558** Retaining Ring.
2. Secure valve body in padded vise with inlet facing upwards. Insert **01464** Seal.
3. Line up hole in valve stem with hole in housing (looking past brass bushing). Insert **01472** Tip Valve so that the metal pin passes through the hole in the valve stem. Install **01468** Spring (small end towards tip valve).
4. Assemble felt muffler and place in **94522** Muffler Cap. Install **94521** Muffler Base onto muffler cap.
5. Install **94538** O-Ring into groove on muffler base. Place **95375** O-Ring and **94526** Spacer into recessed area of muffler cap.
6. Slip **94523** Inlet Adapter through muffler assembly and install **95711** Retainer Ring into groove on inlet adapter.
7. Install **01564** Air Control Ring into valve body housing.
8. Apply #567 Loctite® Pipe Sealant to threads of **94523** Inlet Adapter and install entire muffler assembly onto valve body (torque 23.0 N•m/200 in-lbs.).
9. Replace air fitting. Secure inlet adapter with a wrench before tightening air fitting. Install throttle lever and **01017** Pin.

Right-Angle Housing and Spindle Assembly:

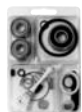
1. Secure **50985** Pinion Shaft in padded vise with key slot end up. Install **02552** Bearing onto pinion shaft.
2. Press pinion gear onto pinion shaft with **50435** Key in key slot. Replace **95939** Retaining Ring.
3. Secure pinion in padded vise and install **50986** Spacer, **01266** Bearing and **53551** Coupling Nut.
4. The **50986** Spacer must fit snug between the two **01266** Bearings (shim required to achieve a snug fit).
5. Apply #271 Loctite® adhesive to spindle thread and install **53551** Coupling Nut (torque 17 N•m/150 in-lbs.).
6. Install **96235** Shell Bearing into angle housing and insert pinion/shaft assembly.
7. Apply #567 Loctite® to angle housing and install **50987** Lock Ring (left-hand thread, 44 mm wrench flats).
8. Insert **50951** Coupling over **53551** Coupling Nut.
9. Install **50987** Lock Ring and angle housing sub-assembly onto **50970** Gear Casing. Take care in the aligning of the two male hex adapters to the **50951** Coupling (torque 45 N•m/400 in-lbs.).
10. Press **50887** Bearing and bevel gear onto spindle assembly.
11. Secure angle housing with drive spindle cavity facing upward and install well lubricated **02048** Wick (wick must be completely saturated with **95848** Gear Oil before installation). **Note:** Do not contaminate wick with any other oil or grease product.
12. Insert spindle assembly and check for gear alignment and backlash. Install shims as required (Minimum backlash is recommended for maximum gear life. Make sure there is clearance throughout 360° revolution.).
13. Install **50963** Retainer with **50899** Shaft Seal in place (left-hand thread), torque 34 N•m/300 in-lbs.

Tool Assembly Complete. Please allow 30 minutes for adhesives to cure before operating tool.

Important: Motor should now be tested for proper operation at 90 PSIG. If motor does not operate properly or operates at a higher RPM than marked on the tool, the tool should be serviced to correct the cause before use. Before operating, place 2-3 drops of Dynabrade Air Lube (P/N **95842**) directly into air inlet with throttle lever depressed. Operate tool for 30 seconds to determine if tool is operating properly and to allow lubricating oils to properly penetrate motor.

Loctite® is a registered trademark of Loctite Corp.

Accessories



96178 Motor Tune-Up Kit

- Includes assorted parts to help maintain and repair motor.



Dynabrade Air Lube (10W/NR)

- Formulated for pneumatic equipment.
- Absorbs up to 10% of its weight in water.
- Prevents rust and formation of gum/sludge for longer tool operation with greater power and less downtime.

95821: 4 oz. (118 ml). **95842:** 1 pt. (473 ml).

95843: 1 gal. (3.8 L).



Dynabrade Angle Gear Oil

- Specifically formulated to saturate wick system in right angle gear head.

95848: 2 oz. (56.7 g) tube.

95849: 10 oz. (283.5 g) tube.

50790 Dynabrade Lubrication Accessory Kit

- Includes: **95848:** Gear Oil 2 oz. tube.
95542: Grease 1 pt. (473 ml).
95541: Lubricant Gun (2).



Grease

- Multi-purpose grease for all types of bearings, cams, gears.
- High film strength; excellent resistance to water, steam, etc.
- Workable range 0° F to 300° F.

95541: Push-type Grease Gun (one-hand operation).

95542: 10 oz. (283.5 g) tube.



57099 Bearing Puller

- This tool is designed to assist in removing the **96325** Bearing from the angle housing assembly.

Dry/Wet Disc Pads

50828 - 6" Dia, Soft, Rubber Face

50829 - 8" Dia, Soft, Rubber Face

50884 - 5" Dia, Rigid, Hook-Face

50946 - 6" Dia, Rigid, Hook-Face

50947 - 8" Dia, Rigid, Hook-Face

54337 - 8" Dia, Soft, Hook-Face

- 5/8" - 11 female thread.



50984 Top Handle Assy.



Visit Our Web Site: www.dynabrade.com

Email: Customer.Service@Dynabrade.com

DYNABRADE, INC., 8989 Sheridan Drive • Clarence, NY 14031-1490 • Phone: (716) 631-0100 • Fax: 716-631-2073 • International Fax: 716-631-2524
DYNABRADE EUROPE S.à.r.l., Zone Artisanale • L-5485 Wormeldange—Haut, Luxembourg • Telephone: 352 76 84 94 1 • Fax: 352 76 84 95 1

©DYNABRADE, INC., 2009

PRINTED IN USA